



MONTHLY MEMBERSHIP PROGRESS REPORT

District 2 T3

Results as of: 03/31/2019

GMT: GREGORY GILLIAM

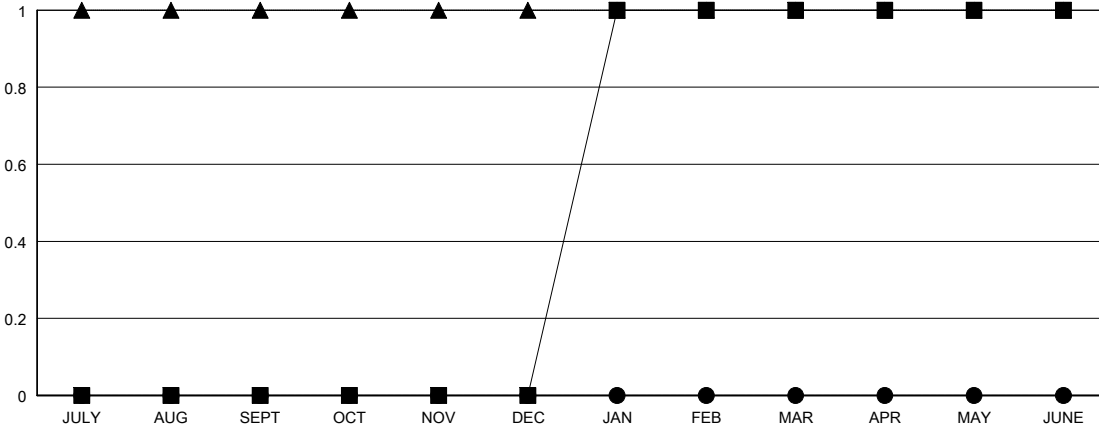
LOCATION TEXAS

GMT CA

Clubs			
RESULTS FOR 2018-2019			
QUARTER	NEW CLUB GOAL	NEW CLUBS	DROPPED CLUBS
JULY/AUG/SEPT	0	0	0
OCT/NOV/DEC	0	0	0
JAN/FEB/MAR	1	0	0
APR/MAY/JUNE	0	0	0

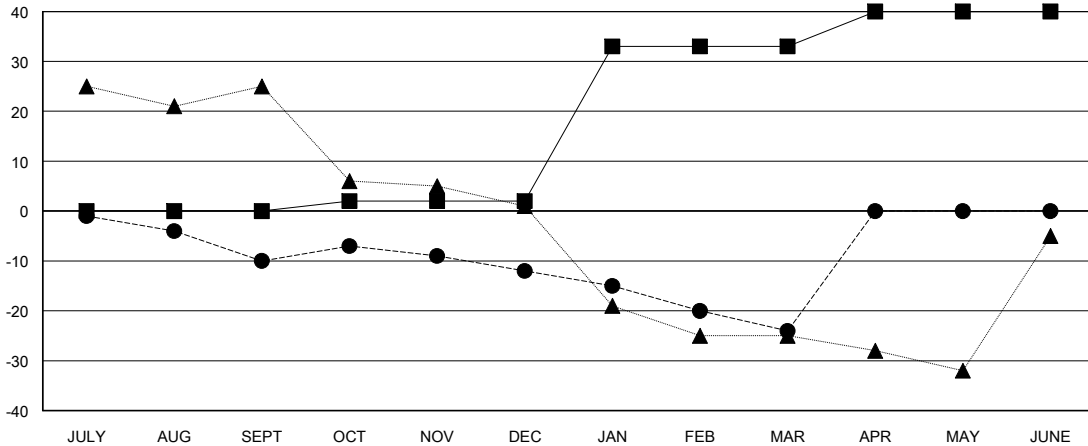
Members			
RESULTS FOR 2018-2019			
QUARTER	MEMBER GROWTH NET GOAL	MEMBER GROWTH ACTUAL	DROPPED MEMBERS ACTUAL (including transfers)
JULY/AUG/SEPT	0	16	25
OCT/NOV/DEC	2	26	25
JAN/FEB/MAR	31	25	37
APR/MAY/JUNE	7	0	0

GOALS AND ACTUAL NEW CLUBS CUMULATIVE



- - CURRENT YEAR GOALS FOR NEW CLUBS
- - CURRENT YEAR ACTUAL NEW CLUBS
- ▲ - LAST YEAR ACTUAL NEW CLUBS

GOALS AND ACTUAL MEMBERS CUMULATIVE



- - MEMBER GROWTH NET GOAL
- - MEMBER GROWTH ACTUAL
- ▲ - LAST YEAR MEMBERSHIP ACTUAL

DROPPED CLUBS: 0	21 CLUBS OF 33 ADDED 1 OR MORE NEW MEMBERS	<u>GENDER DISTRIBUTION</u>	
DROPPED MEMBERS		MALE	419 (58.03%)
DECEASED	9	FEMALE	303 (41.97%)
CLUB CANCELLED	0	Women Percentage Fiscal Year Goal: 30%	
OTHER	78	TOTAL FAMILY UNIT MEMBERS	105
TOTAL	87	FAMILY MEMBERS PAYING HALF DUES	54

[CLICK HERE FOR CUMULATIVE MEMBERSHIP DATA](#)